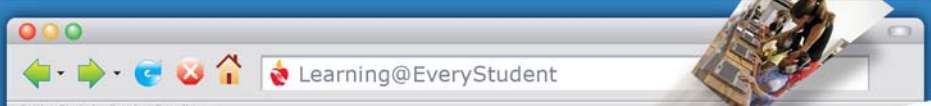


Getting Started Google Favorites ▾

PLANO ISD

2008 Bond Facilities and Technology Task Force

2008 BOND PROGRAM



Getting Started Google Favorites ▾

Pre-Funded Items

- Schell Elementary School
- Child Care Center
- Land Purchases

Total Funded - \$27,850,000

2008 BOND PROGRAM

2000 – 2003 Program Summary

56 Construction Contracts Awarded

- Total Value \$274.3 million**
- 36 Different General Contractors**
- 72 Different District Facilities out of 81**
- 8 New School Campuses**
- 3 New Support Facilities**

Plus facility equipment and system upgrades

2008 BOND PROGRAM

2004 Program Summary

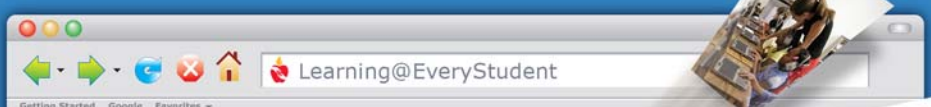
28 Construction Contracts Awarded

- Total Value \$119.9 million**
- 13 Different General Contractors**
- 4 CM at Risk for 17 Projects**
- 31 Different District Facilities out of 81**
- 1 New School Campus**

Plus facility equipment and system upgrades

In design – 4 major renovations with Construction Budgets of \$48.1 million

2008 BOND PROGRAM



Reasons for Detailed Planning
Buildings become obsolete in many ways:

- Life Cycle of Structure
- Changes in Curriculum & Instruction
- Addition and Revision of Instructional Programs
- Technology
- Revisions in Codes & Ordinances

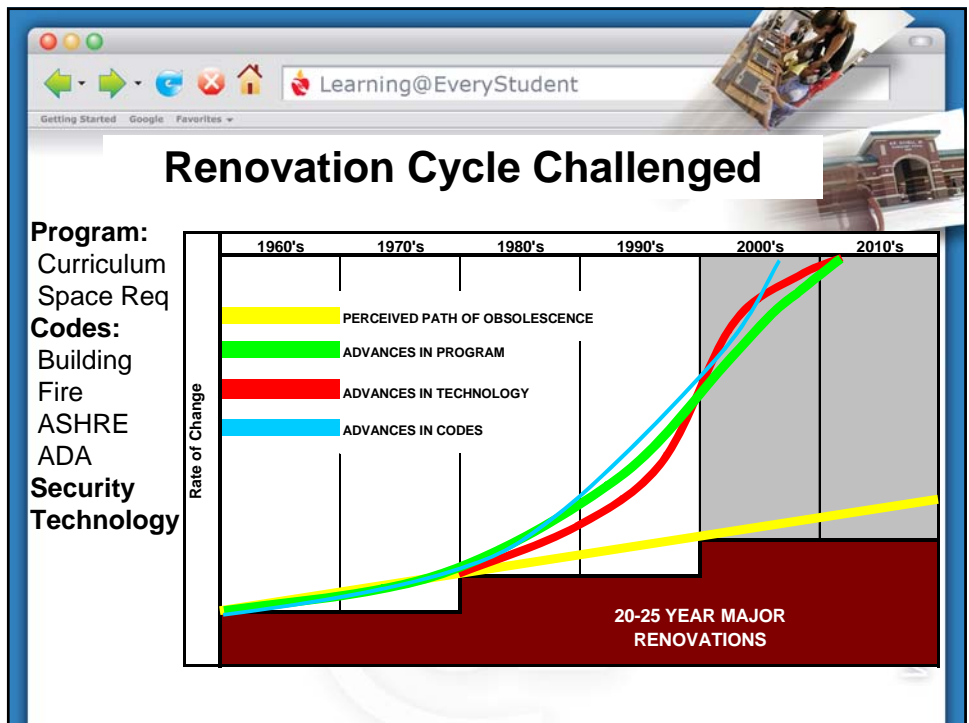
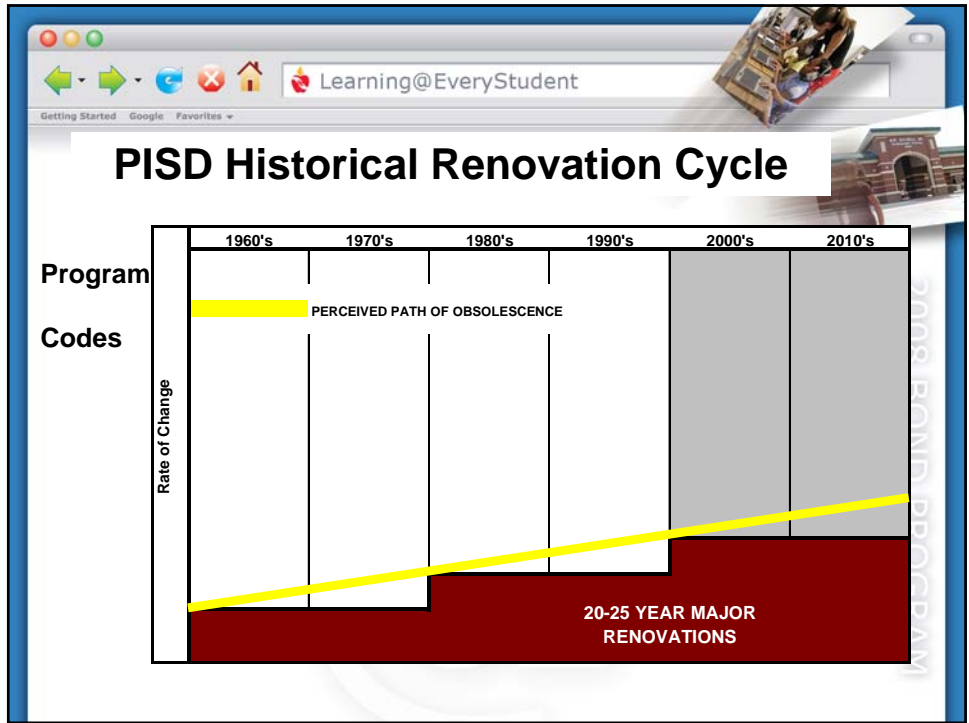
2008 BOND PROGRAM

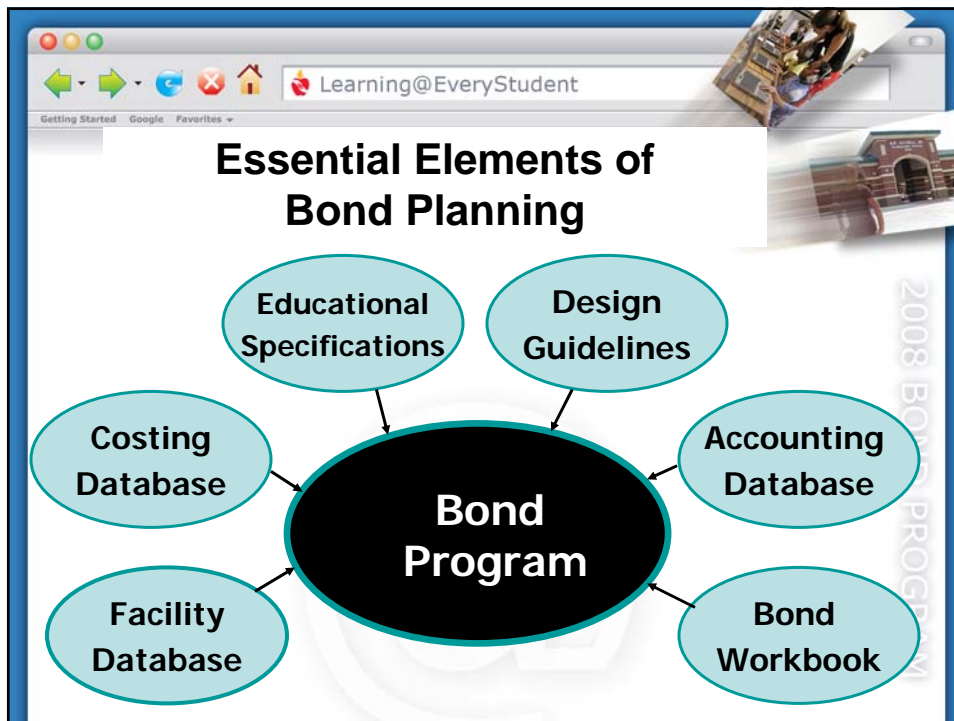
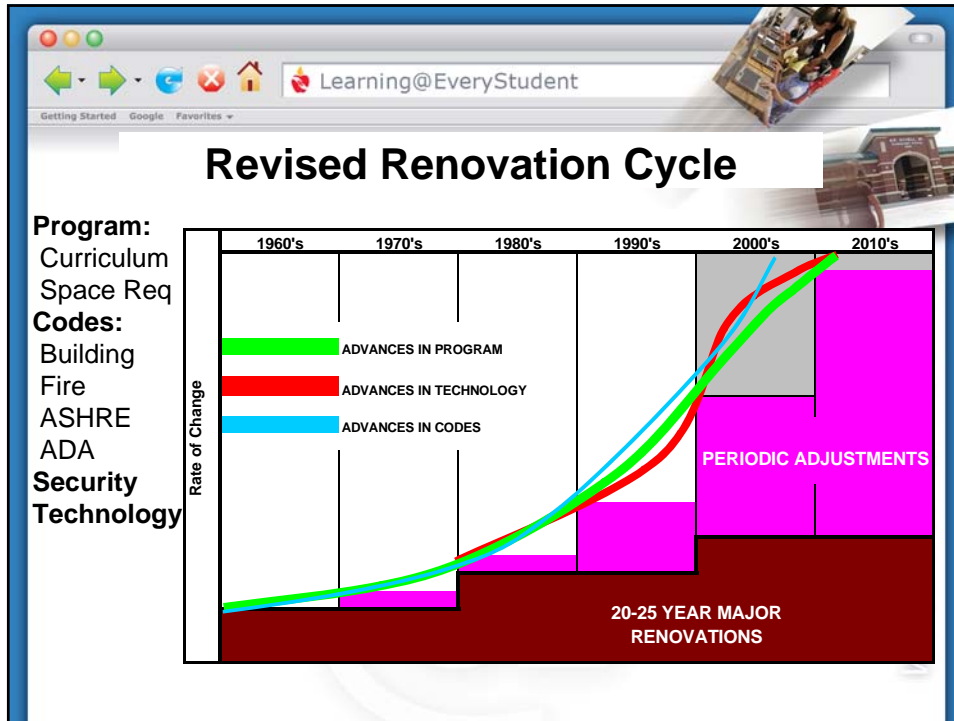


Reasons for Detailed Planning
Buildings become obsolete in many ways:

- ASHRAE (American Society of Heating Refrigerating, and Air-Conditioning Engineers)
- ADA / TDLR - Americans with Disabilities
- Life Safety Issues
- Characteristics of District Maintenance Staff

2008 BOND PROGRAM





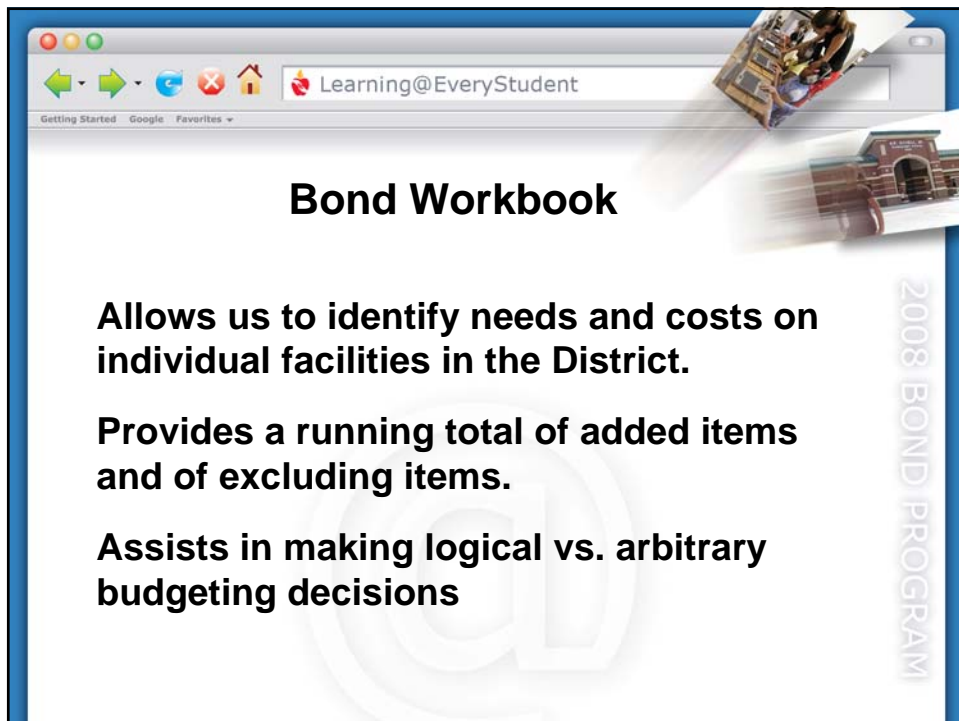


What is Included in Cost?

- Construction Cost**
- FF&T (Furniture, Fixtures & Technology)**
- Professional Fees**
- PM Costs**
- Support**
- Contingency**

Program Cost

2008 BOND PROGRAM



Bond Workbook

- Allows us to identify needs and costs on individual facilities in the District.**
- Provides a running total of added items and of excluding items.**
- Assists in making logical vs. arbitrary budgeting decisions**

2008 BOND PROGRAM

Changes in Costs – New ES

Construction Contracts awarded 3/01:
\$7,520,870
\$7,295,869
\$7,044,820

Construction Contracts awarded in 4/04:
\$8,483,654
\$8,412,654

Construction Contracts awarded in 5/06:
\$11,446,210

2008 BOND PROGRAM

Rate of Change

3/01 to 4/04 - 37 months
Increase 15.94% or 0.43% per month

4/04 to 5/06 - 25 months
Increase 35.48% or 1.42% per month

2008 BOND PROGRAM

Getting Started Google Favorites ▾

Learning@EveryStudent

New Construction

- Early Childhood School - est \$16m
- Elementary School - est \$19m
- Otto Middle School - est \$40m
- High School - est \$64m

2008 BOND PROGRAM

Getting Started Google Favorites ▾

Learning@EveryStudent

20 Year Renovations

- Mendenhall ES (1952)
- Jackson ES (1974)
- Weatherford ES (1975)
- Memorial ES (1966)

2008 BOND PROGRAM

Getting Started Google Favorites

20 Year Renovations

- Brinker ES (1987)
- Daffron ES (1989)
- Hedcoxe ES (1989)
- Bethany ES (1992)
- Mitchell ES (1992)
- Rasor ES (1992)

2008 BOND PROGRAM

This slide is presented as a screenshot of a web browser window. The browser's address bar shows 'Learning@EveryStudent'. The main content area features a large, faint '@' watermark in the background. On the right side, there is a vertical banner that reads '2008 BOND PROGRAM'. The top right corner of the browser window includes a small graphic of a school building and a satellite dish.

Getting Started Google Favorites

Full Renovation - Addition

Elementary School

Historically \$8.2 – 10.9m
Projecting \$9.7 – 14.7m

2008 BOND PROGRAM

This slide is presented as a screenshot of a web browser window, similar to the one above. The browser's address bar shows 'Learning@EveryStudent'. The main content area features a large, faint '@' watermark in the background. On the right side, there is a vertical banner that reads '2008 BOND PROGRAM'. The top right corner of the browser window includes a small graphic of a school building and a satellite dish.

Systems and Compliance

To replace or repair many identified systems not effected by the targeted renovations

such as HVAC/Electrical, Energy Management Systems, Carpet/Floor Replacement, Roof Replacement, Code Related Issues, Fire Alarm Updates, Kitchen Equipment Replacement, ADA, Parking/Site, and Landscape/Irrigation.

2008 BOND PROGRAM

Systems and Compliance

West Cluster
Central Cluster
East Cluster
Support Facilities

2000 Bond - \$22,100,000
2004 Bond - \$48,263,980
2008 Bond – est \$36m

2008 BOND PROGRAM

Learning@EveryStudent

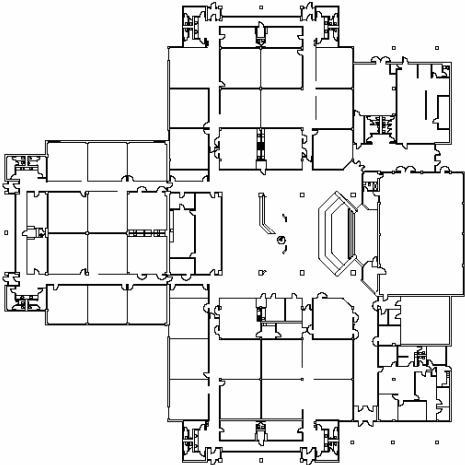
Carlisle Elementary School Additions and Renovations



2008 BOND PROGRAM

This image shows a browser window with the title "Learning@EveryStudent". The main content is a large architectural rendering of a modern school building with a yellow and brown facade, surrounded by greenery and a paved area. The text "2008 BOND PROGRAM" is written vertically on the right side of the rendering. In the top right corner of the browser window, there are small images of a globe and a building.

Learning@EveryStudent



2008 BOND PROGRAM

This image shows a browser window with the title "Learning@EveryStudent". The main content is a detailed floor plan diagram of a school building, showing various rooms, corridors, and a central courtyard. The text "2008 BOND PROGRAM" is written vertically on the right side of the floor plan. In the top right corner of the browser window, there are small images of a globe and a building.

Learning@EveryStudent

Getting Started Google Favorites

Carlisle Elementary School
Proposed Phasing Plan
August 8, 2006

August 2007 - December 2007

June 2007 - August 2007

December 2006 - June 2007

October 2006 - June 2007

October 2006 - June 2007

2008 BOND PROGRAM

Learning@EveryStudent

Getting Started Google Favorites

2008 BOND PROGRAM

